

**IKM Testing AS**  
EQUIPMENT SPECIFICATION



**2.11.3**

**Unit No. VU-03**

**WAX WIPER**



**WAXING SPREAD, COMPLETE**

Dimension	:	W 2440	L 3050	H 2440 mm
Weight	:	812 kg		
Lifting/Transport	:	Transportation on pallet (in 10' Container/Basket)		

**MAIN UNIT (PUMP, GRAYCO KING - Model 68:1)**

P max.	:	428,4 Bar at 6,3 bar air pressure		
Q max:		11 l/min		
Sound level:		113 dB(A) at 6,3 bar, 25cpm		
Weight:	:	115 kg		
Connection air in	:	1" Offshore claw coupling		
Max. Wax temperature	:	82°C		
Equipment Functions	:	To pump wax/coating from buckets/can.		
Built	:	2007		
Additional Information	:	Mobile unit (wagon w/wheels) Approx. 10 m. hose with spray gun can be included		

**ADDITIONAL EQUIPMENT**

Wax Wagon, IPC-900	:	W 500	L 600	H 500 mm
Weight	:	10 kg		
ID Range	:	300 - 900 mm, adjustable on site		
Lifting/Transport	:	Transportation on pallet in Aluminium box.		

Wax/air hoses	:	3/8" for wax 1/2" for Air	200m
Weight	:	350 kg	
Lifting/Transport	:	Supplied on "Reel".	
Additional Information	:	Heat resistant to 260°C	

# IKM Testing AS

## EQUIPMENT SPECIFICATION

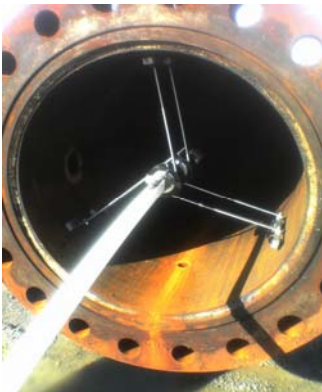


Wire Winch	:	W 600	L 1200	H 600
Wire	:	200m of 6 mm, 316 wire (Stainless Steel)		
Pull capacity	:	800 Kg		
Weight	:	280 kg		
Lifting/Transport	:	Transportation on pallet (in 8' Container/Basket).		

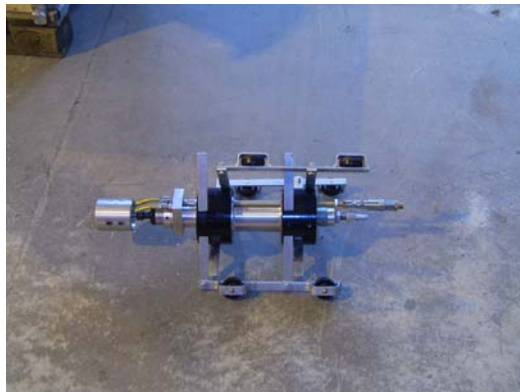
Additional Wire	:	200 m, 6 mm 316 Stainless		
Weight	:	39 kg		
MBL	:	1900 kg		
Lifting/Transport	:	Stored on drum/reel. Transport in 10' Container/Basket.		
Additional Information	:	To be transferred to any winch for use during e.g. pull-in into pipes		

Plastic pipes for staking	:	2", L = 3 m each
Weight	:	Amount: 18-off (total of 54 metres)
	:	~ 1 kg/each

Plastic pipes



Wax Wagon



Wax pump



Wax & air hose



Wire



Winch:



Additional technical details will be submitted on request